

**BALTIMORE COUNTY PUBLIC SCHOOLS**

**DATE:** February 10, 2004

**TO:** **BOARD OF EDUCATION**

**FROM:** Dr. Joe A. Hairston, Superintendent

**SUBJECT:** **Status Report on Cognos**

**ORIGINATOR:** Gregory R. Barlow, Executive Director, Department of Technology

**RESOURCE  
PERSON(S):** Frank Curnoles, Manager, Information Management Group

**RECOMMENDATION**

That the Board will be informed of the status of the Cognos project.

\* \* \* \*

Attachment I – Cognos Presentation



**Baltimore County Public Schools**

**Board Presentation**

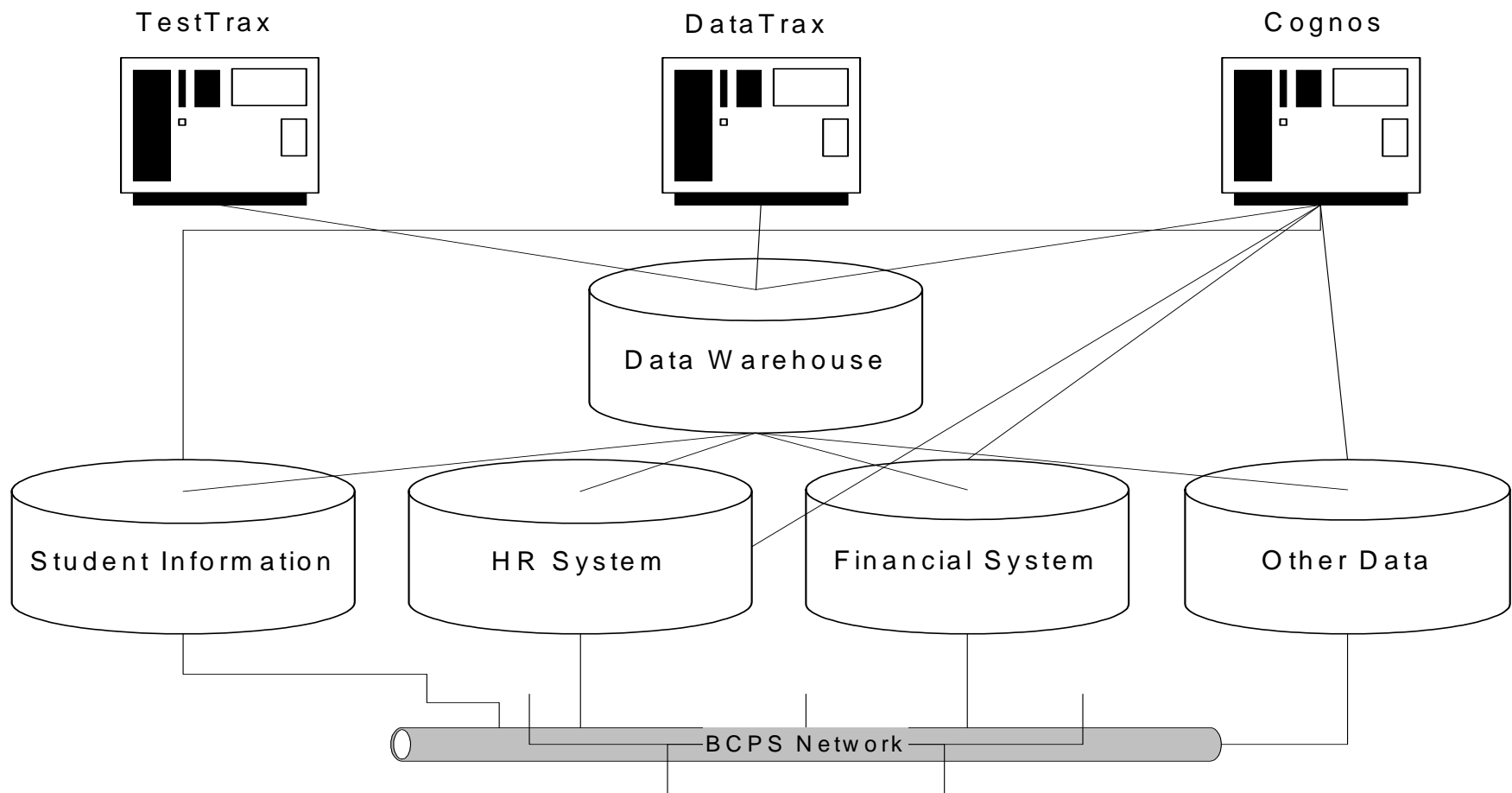
**January 27, 2004**

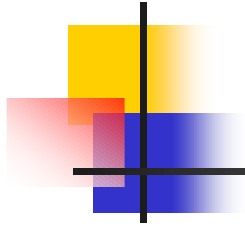


## Data Warehouse Reporting strategy for:

- ④ Blueprint for Progress
- ④ Master Plan
- ④ NCLB
- ④ Adequate Yearly Progress
- ④ Data-Driven Decision Making

# Data Warehouse Reporting Strategies





# Cognos

---

Suite of Business Intelligence tools  
On-Line Analytical Processing-OLAP  
Military Level, Roles based Security  
Confidentiality



# Cognos Definitions

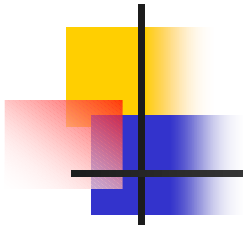
---

## ④ Cognos Cube

- ④ A view of the data that can be manipulated.

## ④ Cognos Report

- ④ Predefined report that can have prompts.



# Cognos

---

## ④ **Target Audience:**

- 📷 Executive Level
- 📷 Curriculum Offices
- 📷 School Administrators
- 📷 Guidance Counselors
- 📷 Teachers



# Production Environment

---

- ④ Advanced Placement
- ④ Agency Placed Foster Student Data
- ④ MSA
- ④ PSAT
- ④ SAT





# Testing Phase

---

③HSA

③Middle and High School Final and  
Exam Grades

③GT Demographics and Detailed  
Information

③AYP



# Planning Phase

---

- ④ Special Education Cube
- ④ MSA Worksheet
- ④ IPT
- ④ Alternative MSA



# intranet

## Baltimore County Public Schools Intranet

Welcome Vicki Sappel! Today is Tuesday, January 13, 2004



### announcements...



good morning!

**Teacher Web Site Creation Tool Now Available!** NovusEDU allows for web site creation without HTML knowledge.



### for Executive Staff members...

[Shared Directory for Custom Reports](#)

### technology

All systems operating normally.

[Customer Support Center](#)

### web-based apps

[Advantage Financial](#)

[Advantage HR](#)

[Advantage HR 2.3.2](#)

[Testing](#)

[askSam](#)

[Press](#)

[Cognos](#)

[Current Staffing](#)

[Data/Report Integrity](#)

[Datatrax](#)

[Email.bcps.org](#)

[Emergency Safety Plans](#)

[Employee Self-Service](#)

BCPS public site

offices

forms

calendars

publications

superintendent's

mission

communicate

giving System

aski Paging System

just for teachers

ite Your Own Class

Site

riculum Library

System BCPS (IEP

ual)

essional Dev.

Resource Library

General Info

ic Incidents Report

Cognos Upfront - Microsoft Internet Explorer

File Edit View Favorites Tools Help

Back Forward Stop Home Search Favorites History

Address <http://cognos/cognos/cgi-bin/upfcgi.exe> Go Links

**Baltimore County Public Schools**

Home | Personalize | Log Off | Help

### Baltimore County Public Schools Main Reporting Menu

New Edit View | [NewsBox Properties](#)

[Public Exchange Reports](#) [Student Achievement](#)

Actions Properties Actions Properties

**Index Search**

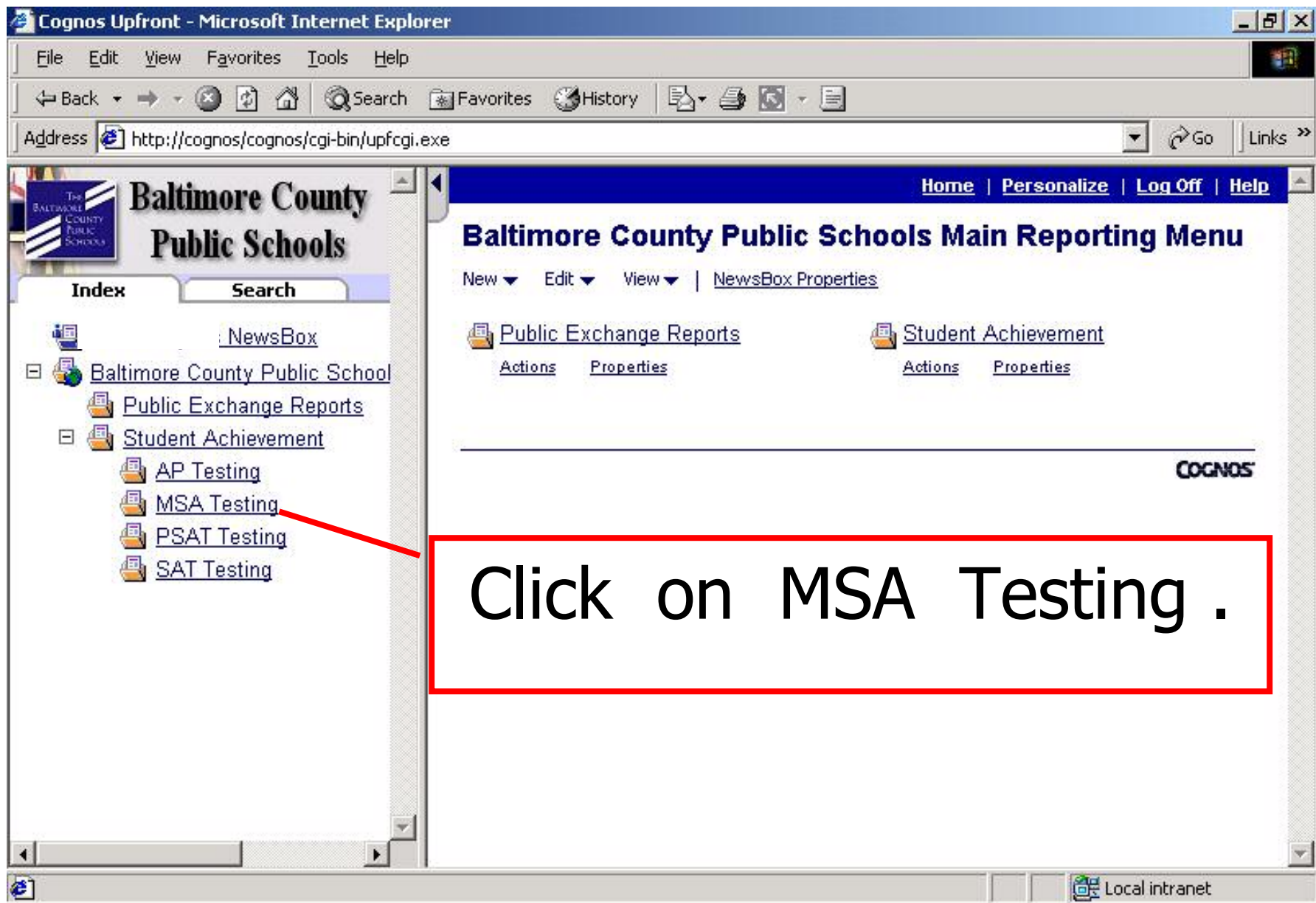
- [NewsBox](#)
- [Baltimore County Public School](#)
  - [Public Exchange Reports](#)
  - [Student Achievement](#)
    - [AP Testing](#)
    - [MSA Testing](#)
    - [PSAT Testing](#)
    - [SAT Testing](#)

**NewsBox** = Your view of the Cube and your reports can be stored at this location.

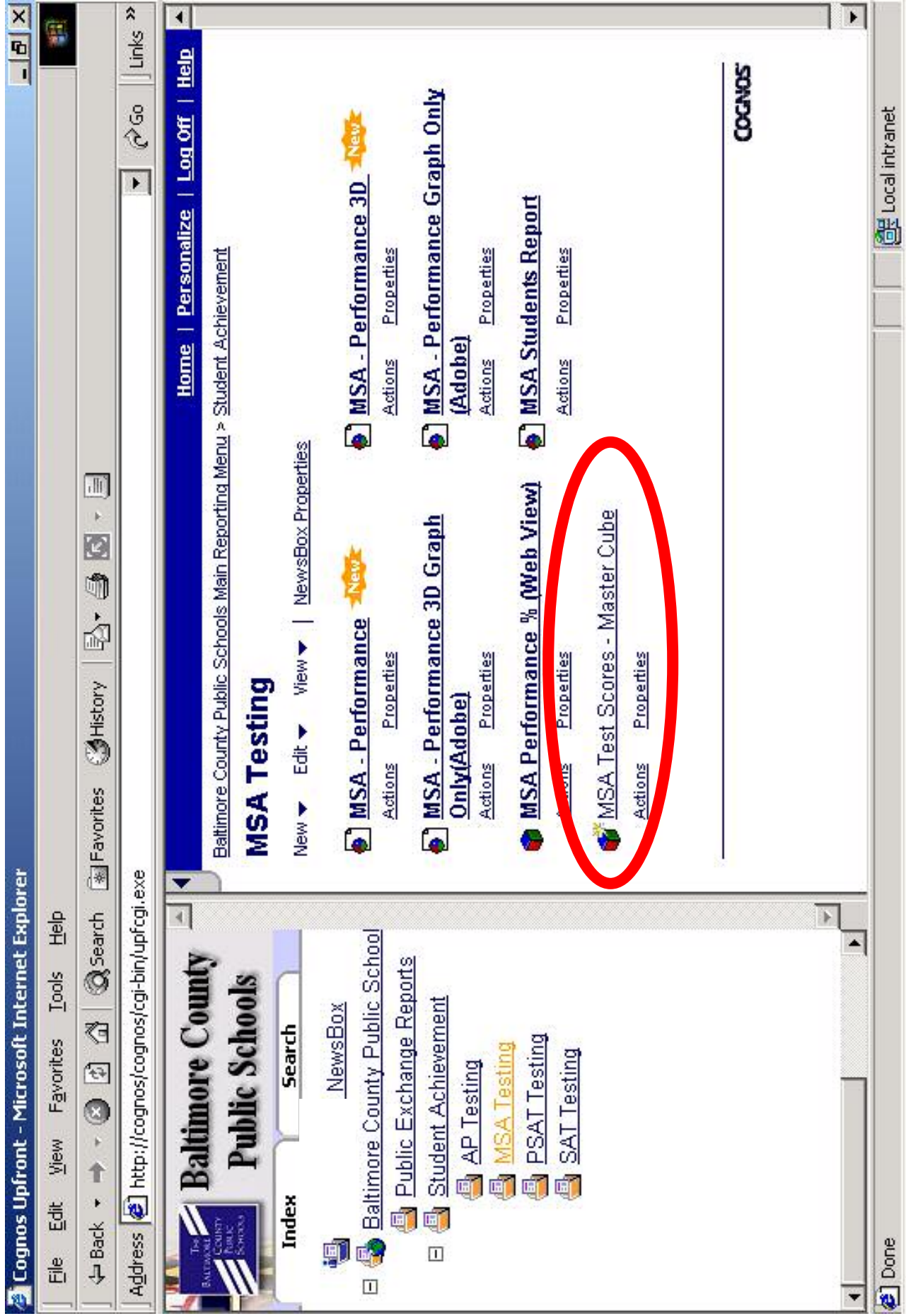
**Public Exchange Reports** = Reports that the Administrative Team has approved for general viewing.

COGNOS

Local intranet









# Question

---

- ④ **What is the percentage of Basic Reading Grade 8 students in your school by Gender?**
- ④ **Create a Split View Chart of this result.**

MSA Test Scores Cube - Cognos PowerPlay Web Explorer - Microsoft Internet Explorer

EditViewFavoritesToolsHelp

backforwardstopsearchfavoritesmedia

http://cognos/cognos/cgi-bin/ppdscgi.exe?DC=Q&nia=Run&nid=2928d824409711d8bffc83f5c6d35dc&nic=%2FProduction%20Cubes%20FMSA%20Test%20Scores%20Cube

MSA Test Scores Cube

MSA Test Scores Cube

All Performance LevelsAll SchoolsAll Test TypesAll YearsAll GradesAll GendersAll Races

Test Taken as values

	Middle School	High School	Elementary School	Junior/Senior School	Special Education	All Schools
Basic	8,597	7,342	11,933	237	140	28,249
Proficient & Advanced	8,777	8,388	20,204	30	32	37,431
All Performance Levels	17,374	15,730	32,137	267	172	65,680

MSA Test Scores Cube

All Performance Levels

All Schools

All Test Types

All Years

All Grades

All Genders

All Races

Gifted Included

FARM Included

Special Ed Included

ESOL Included

MEASURES

Local intranet



The screenshot shows the Cognos PowerPlay Web Explorer interface. The main content area displays a table of test scores for the 'MSA Test Scores Cube'. The table is filtered by 'Reading' (indicated by a red circle around the 'Reading' dropdown in the 'All Schools' group). The table has columns for 'Test Taken as values', 'Middle School', 'High School', 'Elementary School', 'Junior/Senior School', and 'All Schools'. The rows show scores for 'Basic', 'Proficient & Advanced', and 'All Performance Levels'.

Test Taken as values	Middle School	High School	Elementary School	Junior/Senior School	All Schools
Basic	3,404	3,016	5,362	130	11,979
Proficient & Advanced	5,279	5,231	10,725	29	21,285
All Performance Levels	8,683	8,247	16,087	159	33,264

The interface includes a navigation pane on the left with a tree view showing the hierarchy of the cube. The top navigation bar shows the 'MSA Test Scores Cube' and various filters. The bottom status bar indicates 'Opens the Help window.' and 'Local intranet'.









MSA Test Scores Cube - Cognos PowerPlay Web Explorer - Microsoft Internet Explorer

back

edit

view

favorites

tools

help

http://cognos/cognos/cgi-bin/ppdscgi.exe?DC=Q&nia=Run&nid=2928d824409711d8bffc83f5c6d35dc&nic=%2FProduction%20Cubes%20FMSA%20Test%20Scores%20Cube

Go

MSA Test Scores Cube

All Performance Levels

CATONSVILLE MIDDLE

Reading

All Years

All Grades

All Genders

MSA Test Scores Cube

Test Taken as values

Basic

Proficient & Advanced

All Performance Levels

CATONSVILLE MIDDLE

49

167

216

MSA Test Scores Cube

All Performance Levels

All Schools

All Test Types

All Years

All Grades

All Genders

All Races

Gifted Included

FARM Included

Special Ed Included

ESOL Included

MEASURES

Unknown Zone (Mixed)

MSA Test Scores Cube - Cognos PowerPlay Web Explorer - Microsoft Internet Explorer

back view stop refresh search favorites media

http://cognos/cognos/cgi-bin/ppdscgi.exe?DC=Q&nia=Run&nid=2928d824409711d8bffc83f5c6d35dc&nic=%2FFProduction%20Cubes%20FMSA%20Test%20Scores%20Cube

msa Test Scores Cube

Basic CATONSVILLE MIDDLE Reading All Years All Grades All Genders All Races

Test Taken as values

CATONSVILLE MIDDLE

Basic

49

49

MSA Test Scores Cube  
All Performance Levels  
All Schools  
All Test Types  
All Years  
All Grades  
All Genders  
All Races  
Gifted Included  
FARM Included  
Special Ed Included  
ESOL Included  
MEASURES

Unknown Zone (Mixed)

MSA Test Scores Cube - Cognos PowerPlay Web Explorer - Microsoft Internet Explorer

Edit View Favorites Tools Help

back forward stop search favorites media

http://cognos/cognos/cgi-bin/ppdscgi.exe?DC=Q&nia=Run&nid=2928d824409711d8bffc83f5c6d35dc&nic=%2FProduction%20Cubes%20Test%20Scores%20Cube

MSA Test Scores Cube

Basic CATONSVILLE MIDDLE Reading All Years All Grades All Genders All Races

Test Taken as values

	Male	Female	Basic
CATONSVILLE MIDDLE	33	16	33
CATONSVILLE MIDDLE	16	49	16
CATONSVILLE MIDDLE	49		49

os PowerPlay Web Explorer

MSA Test Scores Cube

All Performance Levels

All Schools

All Test Types

All Years

All Grades

All Genders

All Races

Gifted Included

FARM Included

Special Ed Included

ESOL Included

MEASURES

Unknown Zone (Mixed)

Office

MSA Test Scores Cube - Cognos PowerPlay Web Explorer - Microsoft Internet Explorer

Back View Favorites Tools Help

Back Forward Stop Search Favorites Media

ress http://cognos/cognos/cgi-bin/ppdscgi.exe?DC=Q&nia=Run&id=2928d824409711d8bffc83f5c6d35dc&nic=%2FProduction%20Cubes%20FMSA%20Test%20Scores%20Cube

Go Links

Microsoft

MSA Test Scores Cube

Basic CATONSVILLE MIDDLE Reading All Years All Grades All Genders All Races

Test Taken as % of column total

CATONSVILLE MIDDLE	Male	Female	Basic
	67.35%	32.65%	67.35%
CATONSVILLE MIDDLE	100.00%	100.00%	100.00%

MSA Test Scores Cube

- All Performance Levels
- All Schools
- All Test Types
- All Years
- All Grades
- All Genders
- All Races
- Gifted Included
- FARM Included
- Special Ed Included
- ESOL Included
- MEASURES

MSA Test Scores Cube

Navigation icons



MSA Test Scores Cube - Cognos PowerPlay Web Explorer - Microsoft Internet Explorer

back

edit

view

favorites

tools

help

http://cognos/cognos/cgi-bin/ppdscgi.exe?DC=Q&nia=Run&nid=2928d824409711d8bffc83f5c6d35dc&nic=%2FProduction%20Cubes%20FMSA%20Test%20Scores%20Cube

Go

MSA Test Scores Cube

Basic

CATONSVILLE MIDDLE

Reading

All Years

All Grades

All Genders

All Races

Column:

Basic

MSA Test Scores Cube

All Performance Levels

All Schools

All Test Types

All Test Years

All Grades

All Genders

All Races

Gifted Included

FARM Included

Special Ed Included

ESOL Included

MEASURES

Test Taken as % of row total

Basic

Male

Female

67.35%

32.65%

100.00%

Male

Female

67.35%

32.65%

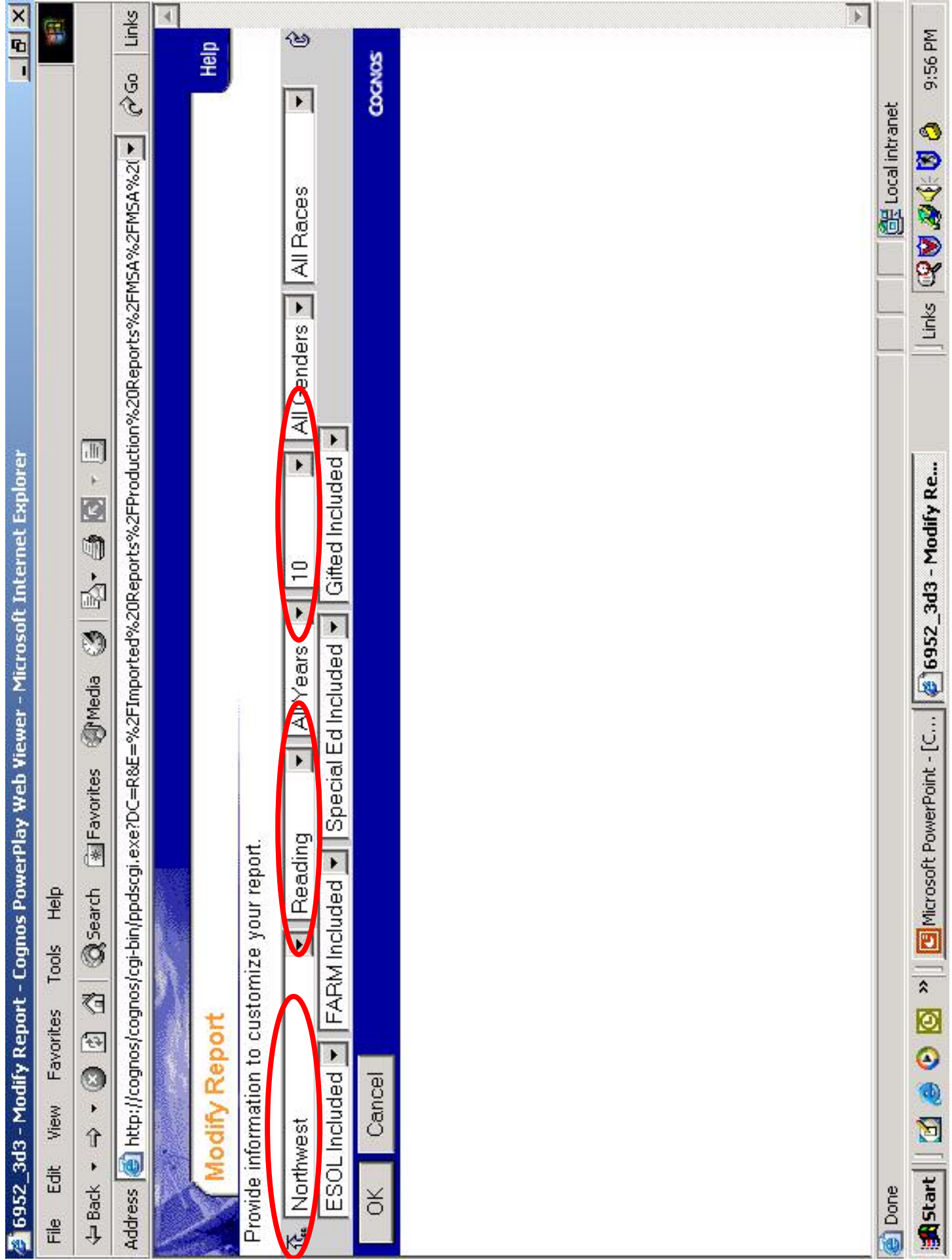
Local intranet



# Question

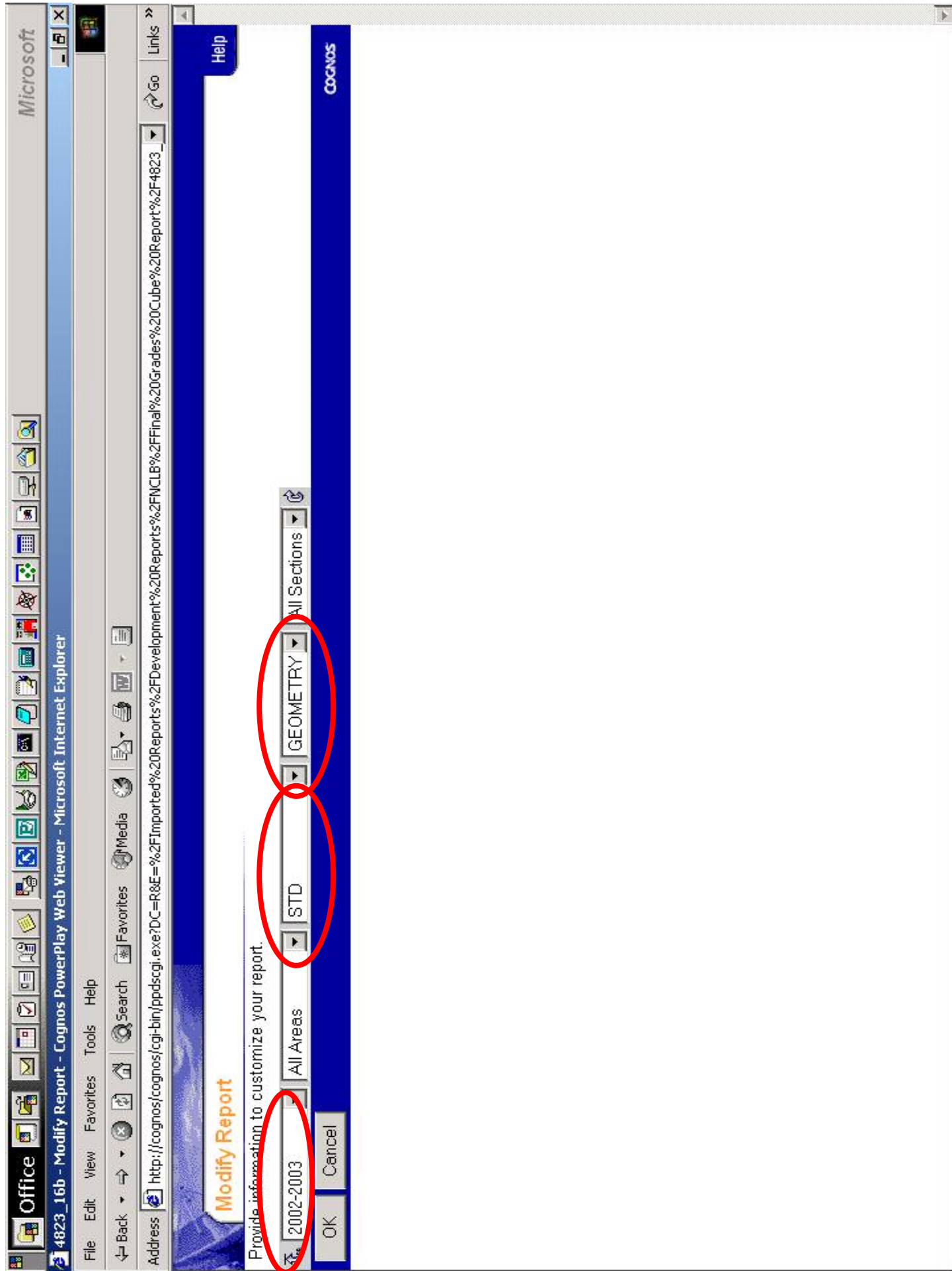
---

- ④ **Which high schools grade 10 had the best overall MSA performance in Reading in the Northwest Area?**











# TESTING PHASE

---

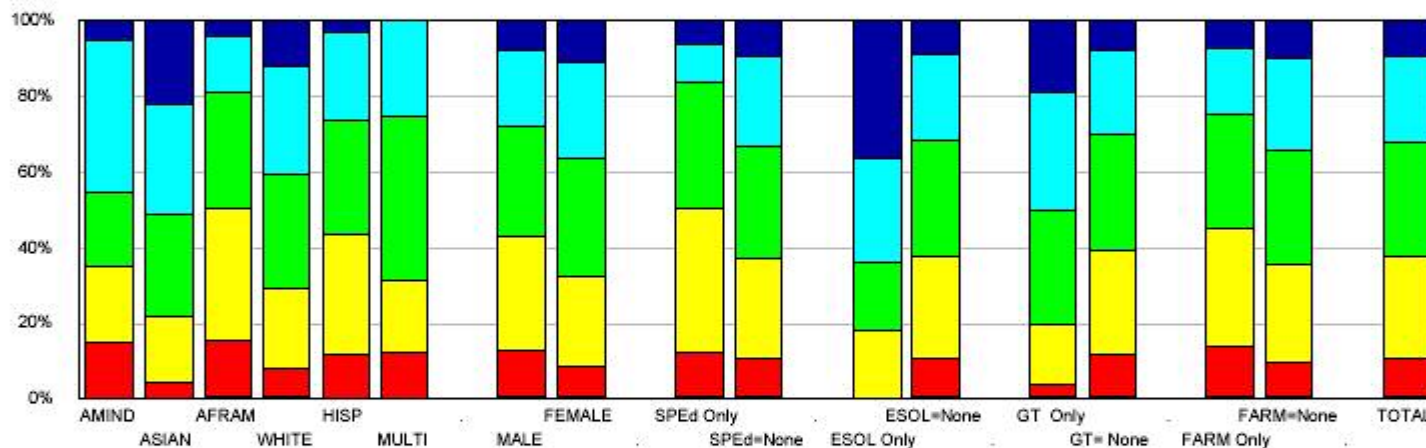
Data is test data on the following  
graph

## Student Final Grades Report

School Year: 2002-2003, School: All Areas, Course Level: STD, Course: GEOMETRY, Section: All Sections

Testing Phase

Student Count



	AMIND	ASIAN	AFRAM	WHITE	HISP	MULTI	MALE	FEMALE	SPED Only	SPED=None	ESOL Only	ESOL=None	GT Only	GT=None	FARM Only	FARM=None	TOTAL
No Grade	0.00%	0.00%	0.42%	0.40%	0.00%	0.00%	0.34%	0.41%	0.77%	0.36%	0.00%	0.38%	0.71%	0.34%	0.70%	0.30%	0.38%
E + F + O	15.00%	4.67%	14.79%	7.27%	11.59%	12.50%	12.82%	7.86%	11.54%	10.18%	0.00%	10.35%	3.10%	11.14%	13.32%	9.49%	10.23%
D + I	20.00%	17.33%	35.24%	21.46%	31.88%	18.75%	29.67%	24.21%	38.46%	26.39%	18.18%	26.92%	15.95%	28.21%	31.14%	25.78%	26.81%
C + P + M	20.00%	26.67%	30.57%	30.48%	30.43%	43.75%	29.27%	31.35%	33.08%	30.26%	18.18%	30.50%	30.00%	30.40%	30.01%	30.44%	30.36%
B	40.00%	29.33%	14.79%	28.09%	23.19%	25.00%	20.25%	25.40%	10.00%	23.42%	27.27%	22.89%	31.43%	21.86%	17.95%	24.14%	22.94%
A + S	5.00%	22.00%	4.19%	12.30%	2.90%	0.00%	7.66%	10.76%	6.15%	9.39%	35.36%	8.95%	18.81%	8.06%	6.87%	9.86%	9.28%



# Where To Go From Here?

---

- ④ Training
  - ④ Users
  - ④ Developers
- ④ Additional Development of Reports
  - ④ Special Education Cube
  - ④ MSA Worksheet
  - ④ IPT
  - ④ Alternative MSA





End of Presentation